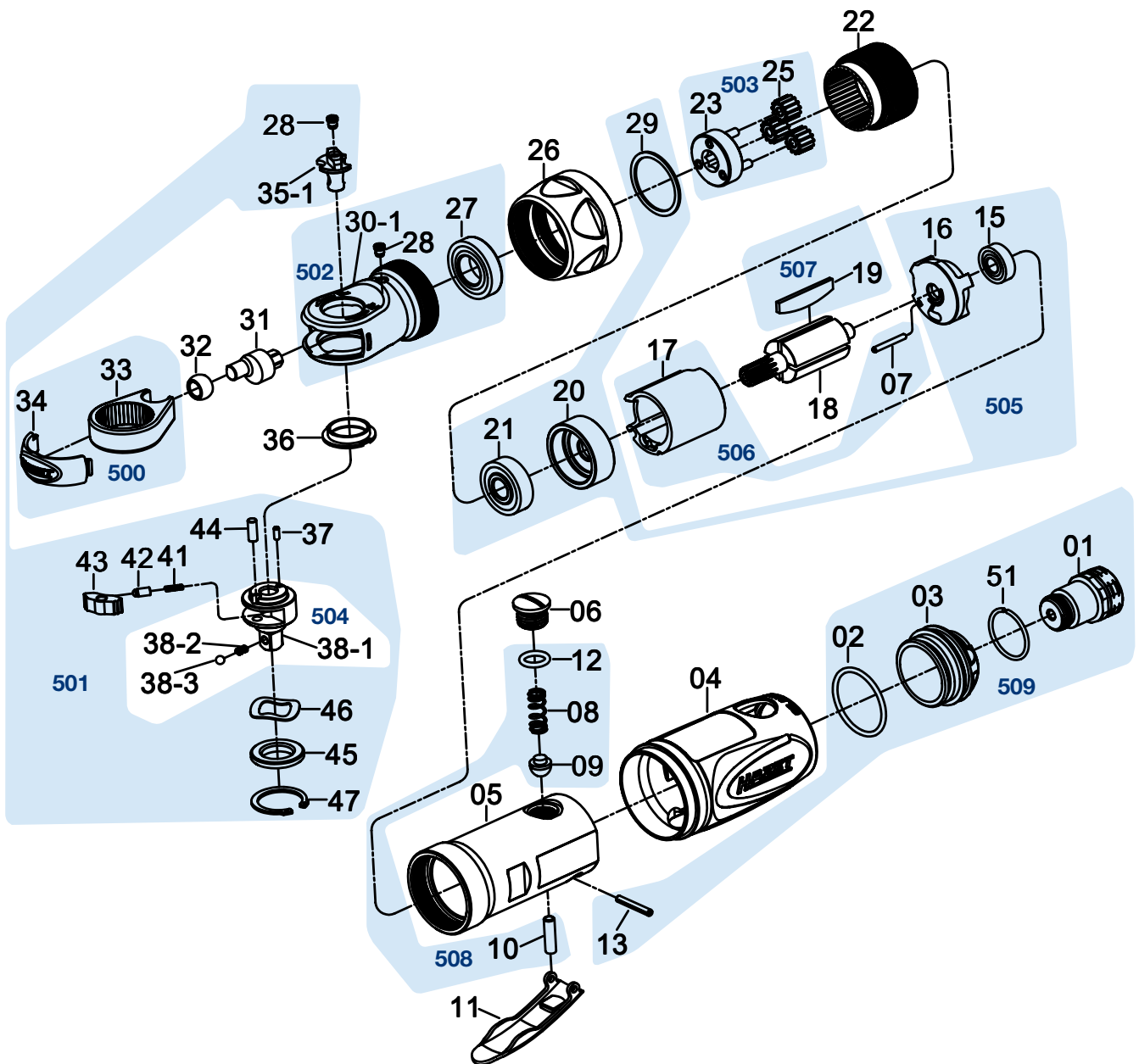





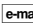
# Erersatzteile 9021 P-2







|    | HAZET<br>No. | Bezeichnung    | Name          |   |
|----|--------------|----------------|---------------|---|
| 4  | 9021P-2-01   | Handgriff      | Rubber-Grip   | 1 |
| 5  | 9021P-2-02   | Motor-Gehäuse  | Motor Housing | 1 |
| 6  | 9021P-2-03   | Ventilschraube | Air Regulator | 1 |
| 11 | 9021P-2-04   | Abzugshebel    | Trigger       | 1 |
| 18 | 9021P-2-05   | Rotor          | Rotor         | 1 |
| 22 | 9021P-2-06   | Zahnkranz      | Ring-Gear     | 1 |
| 26 | 9021P-2-07   | Mutter         | Coupling Nut  | 1 |
| 31 | 9021P-2-08   | Kurbelwelle    | Crank Shaft   | 1 |
| 32 | 9021P-2-09   | Antriebsbuchse | Drive Bushing | 1 |

|   | <b>HAZET</b><br>No. | <b>Bezeichnung</b>  | <b>Name</b>   |  |
|---|---------------------|---|---|---|
| 500   | 9021P-2-010/2       | Gabel Satz<br>Inhalt: 33, 34  | <i>Ratchet-Yoke</i><br><i>Contents: 33, 34</i>  | 1   |
| 501   | 9021P-2-011/11      | Ratschen-Innenteile Satz<br>Inhalt: 28, 35-1, 36, 37, 41, 42, 43, 44,<br>45, 46, 47 | <i>Ratchet-Repair Set</i><br><i>Inhalt: 28, 35-1, 36, 37, 41, 42, 43, 44,<br/>45 46, 47</i> | 1   |
| 502   | 9021P-2-012/3       | Ratschengehäuse Satz<br>Inhalt: 27, 28, 30-1  | <i>Ratchet-Housing Set</i><br><i>Contents: 27, 28, 30-1</i>                                 | 1   |
| 503   | 9021P-2-013/4       | Antrieb Satz<br>Inhalt: 23, 25 (x3)   | <i>Idler-Gear Set</i><br><i>Contents: 23, 25 (x3)</i>                                       | 1   |
| 504   | 9021P-2-014/3       | Vierkant Satz<br>Inhalt: 38-1, 38-2, 38-3   | <i>Anvil Set</i><br><i>Contents: 38-1, 38-2, 38-3</i>                                       | 1   |
| 505   | 9021P-2-015/5       | Lager-Einheit Satz<br>Inhalt: 15, 16, 20, 21, 29                                    | <i>Bearing-Unit Set</i><br><i>Contents: 15, 16, 20, 21, 29</i>                              | 1   |
| 506   | 9021P-2-016/2       | Zylinder Satz<br>Inhalt: 7, 17  | <i>Cylinder Set</i><br><i>Contents: 7, 17</i>   | 1   |
| 507   | 9021P-2-017/4       | Lamellen Satz<br>Inhalt: 19 (x4)  | <i>Blades Set</i><br><i>Contents: 19 (x4)</i>   | 1   |
| 508   | 9021P-2-018/4       | Ventileinheit Satz<br>Inhalt: 8, 9, 10, 12  | <i>Valve Set</i><br><i>Contents: 8, 9, 10, 12</i>   | 1   |
| 509   | 9021P-2-019/5       | Luftauslass Satz<br>Inhalt: 1, 2, 3, 13, 51   | <i>Air-Exhaust Set</i><br><i>Contents: 1, 2, 3, 13, 51</i>                                  | 1   |
| Alle Positionen, die keine <b>HAZET</b> No. haben, sind nur über den HAZET-Service zu bestellen |                     |   |   |   |

Zur Bestellung und für Rückfragen wenden Sie sich bitte an unsere Service-Abteilung.

 +49 (0) 21 91/7 92 355 •  +49 (0) 21 91/7 92 523 •  service-center@hazet.de

**HAZET - WERK Hermann Zerver GmbH & Co. KG** •  10 04 61 • D-42804 Remscheid • Germany  
 +49 (0) 21 91 / 7 92-0 •  +49 (0) 21 91 / 7 92-375 (National) •  +49 (0) 21 91 / 7 92-400 (International)  
 hazet.de •  info@hazet.de